



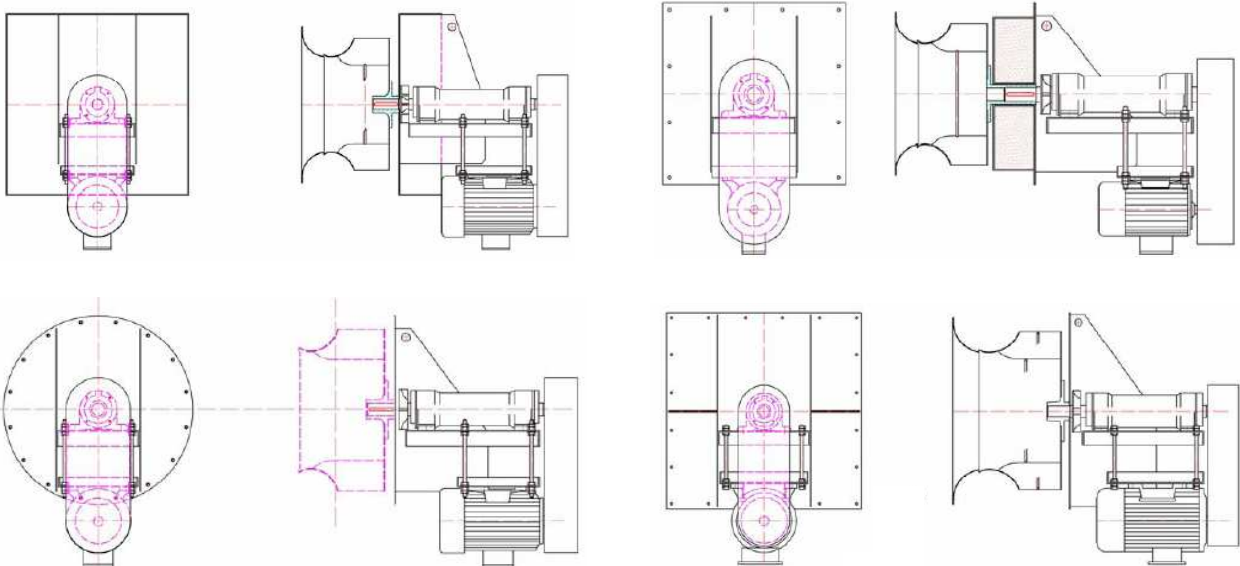


10. Industrial oven circulators

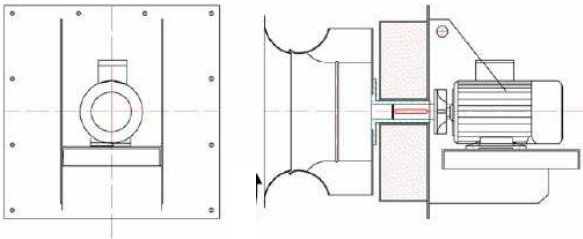
Pictures *	Type	General description *
	<p>Forward curved blade impeller</p>	<p>V = 180 / 96.000 m³/h P = 130 / 1.500 Pa  Max temperature: 400°C (regarding model). Different executions (4, 5 ou 10) [see <i>infra</i>]. With or without casing 3 faces. With or without calorifugal protection. Material : steel, AISI 316, AISI 321 on demand, Creusabro,... Special motor shaft, cooling device,...</p>
	<p>Reverse blade impeller</p>	<p>V = 1.000 / 96.000 m³/h P = 200 / 4.000 Pa  Max temperature: 400°C (regarding model). Different executions (4, 5 ou 10) [see <i>infra</i>]. With or without casing 3 faces. With or without calorifugal protection. Material : steel, AISI 316, AISI 321 on demand, Creusabro,... Special motor shaft, cooling device,...</p>

* The above pictures and descriptions are not contractual and not exhaustive.

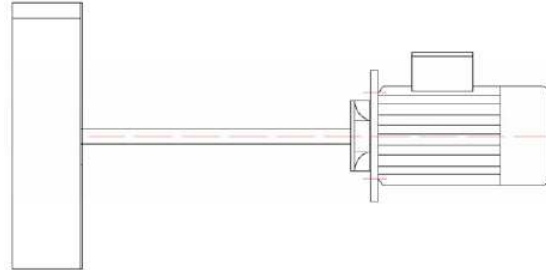
Execution 10 :



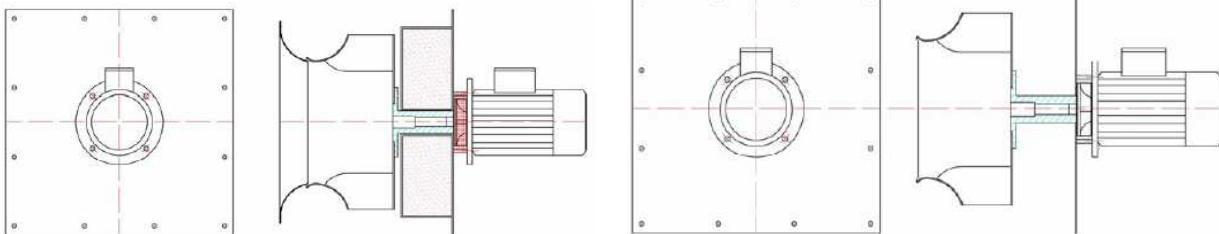
Execution 4 :



Execution 4 or 5 :



Execution 5 :



Some realizations :

