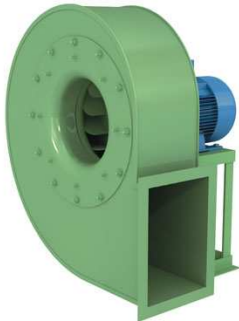


## SOME OF OUR REFERENCES – “MAINTENANCE”



Sector : **metal and waste recycling**

Country : Belgium

Type : **MEV-EUM 901 ex.4** fan, motor 30kW 4P, with vibration detector and ducting accessories

Application : dedusting

Working point : 27.000 m<sup>3</sup>/h @ 280 mmWC



Sector : **industrial maintenance**

Country : Belgium

Type : **double inlet impeller, taylor made**, diameter 900 mm, 42 forward curved blades, with shaft, for motor 18,5kW 4P

Application : HVAC

Working point : n.a.



Sector : **fire resistant products**

Country : Belgium

Type : **MEV-EUMc 631 T ex.12** fan, motor 15kW 2P, for hot air at 350°C continuous

Application : combustion fumes exhaust

Working point : 15.000 m<sup>3</sup>/h @ 100 mmWC



Sector : **boilermaking industry maintenance**

Country : France

Type : **MBA-CB5-38/8/A 90** fan, motor 7,5kW, Jauflex coupling, equipped with silencer.

Application : dedusting

Working point : 3.300 m<sup>3</sup>/h @ 450 mmWC



Sector : **fitter / maintenance**

Country : Switzerland

Type : **MEV-TG 501/C ex.4** fan, motor 7,5kW, with open blades

Application : pneumatic transport of plastic scraps

Working point : 3.000 m<sup>3</sup>/h @ 400 mmWC



Sector : **industrial maintenance**

Country: France

Type : **MEV-APRF 631 ex.4** high pressure fan, motor 4 kW, 440V 60Hz, reverse blade impeller

Application: incinerator ventilation

Working point : 1.000 m<sup>3</sup>/h @ 750 mmWC



Sector : **industrial maintenance**

Country: France

Type : **MHA-HV 900/9-9/45/B/PAG** impellers, diameter 900 mm, for motor 3kW 6P

Application: cooling towers

Working point : 35.000 m<sup>3</sup>/h @ 40 Pa



Sector : **hydro-electrical power station maintenance**

Country : France

Type : **MCA-GMV4 65-80C** pump, motor 2,8kW

Application : draining overload to dump

Working point : 100 m<sup>3</sup>/h @ 1,5 Bars



Sector : **fitter / maintenance**

Country : France

Type : **MEV-BPc 501 ex.12** fan, motor 2,2kW, belt driving

Application : industrial kitchen hood

Working point : 6.500 m<sup>3</sup>/h @ 50 mmWC



Sector : **milk treatment**

Country : the Netherlands

Type : **MDY-PR-AC 352 M ex.2** fan, motor 2,2kW 2P, in synthetic materials

Application : corrosive gaz exhaust

Working point : 4.000 m<sup>3</sup>/h @ 95 mmWC



Sector : **technical and energy services company**  
Country : Belgium  
Type : **MCA-NM-B 32/125 SE** water pump, in bronze, motor 1,5kW  
Application : pressurisation  
Working point : 250 litres/min @ 20 m HMT



Sector : **installation of watering systems**  
Country : Belgium  
Type : **MCA-NG 6/18E** pump, motor 1,5kW  
Application : golf watering  
Working point : 3 m<sup>3</sup>/h @ 50 mHMT



Secteur : **industrial maintenance**  
Country: France  
Type : **MSP-TET-N-AT 2/400** fan with bifurcated motor 1,1kW 2P, for air up to 150°C continuous  
Application : foundry  
Working point : 5.000 m<sup>3</sup>/h @ 15 mmWC



Sector : **technical maintenance company**  
Country : Belgium  
Type : **MDY-FC 718 T** fan, motor 0,75kW 8P  
Application : ventilation production premises  
Working point : 8.000 m<sup>3</sup>/h @ 100 Pa



Sector : **fitter / maintenance**  
Country : Belgium  
Type : **MRE-P 404** fan, motor 0,55kW 4P, made in PE, impeller made in PP  
Application: sucking of exhaust gaz (garage)  
Working point : 4.000 m<sup>3</sup>/h @ 330 Pa



Sector : **maintenance industrielle**

Country : Belgium

Type : **MDY-QC-ATX 504 T "GM"** fan, motor 0,55kW 4P, reverse flow (impeller to motor), with special support frame

Application: ventilation of petro-chemical tanks

Working point : 8.600 m<sup>3</sup>/h @ 4 mmCE



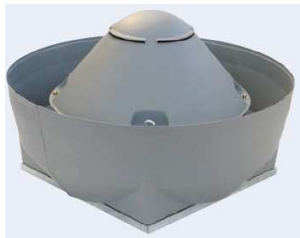
Secteur : **HVAC automatisation**

Country : Luxemburg

Type : **MSP-CRMT-HT 225/4** fan, motor 0,55kW 4P, for air up to 300°C continuous or 400°C/2H

Application : oven exhaust

Working point : 2.000 m<sup>3</sup>/h @ 25 mmWC



Sector : **fitter**

Country : Belgium

Type : **MDY-FCV-2V 35T** fan, motor 0,26kW, 2 speeds  $\Delta/\lambda$ , with vertical discharge

Application : ventilation

Working point : 1.000 / 2.600 m<sup>3</sup>/h @ 15mmWC



Sector : **technical and energy services company**

Country : Belgium

Type : **MRE-DA 12/12 CM/AL** fan, motor 736W 6P

Application : HVAC

Working point : 4.000 m<sup>3</sup>/h @ 310 Pa



Sector : **fitter**

Country : Belgium

Type : **MDY-SS-BOX 250 M** fan, motor 0,180 kW, in soundproof box

Application : school kitchen hood

Working point : 600 m<sup>3</sup>/h @ 270 Pa